

README

This page provides information on how to download, run and setup the Eclipse bundle for executing AML2PMIF ATL model transformation.

Download Eclipse

First you have to download the [Eclipse Modeling Tools \(version: Luna\)](#) for your operating system and architecture. Once the download is finished, unzip the downloaded archive to any location you prefer. Please note, however, that the location should be writable without additional user permissions so that Eclipse may autonomously install updates and additional plug-ins.

Run Eclipse

The prerequisite for running Eclipse is a current version of the [Java Runtime Environment](#). Eclipse itself does not have to be "installed" per se. You may directly start Eclipse by running eclipse (.exe in case you use Windows). Select a workspace location according to your personal preferences.

Install Required Plug-Ins

You need to install four additional plug-ins:

- ATL
- Papyrus

1. ATL, Xtext, OCL Tools

For installing ATL you have to select Help -> Install Modeling Components and check the components:

- Model To Model – ATL
- Modeler – Papyrus (it includes the SysML profile for UML Models)

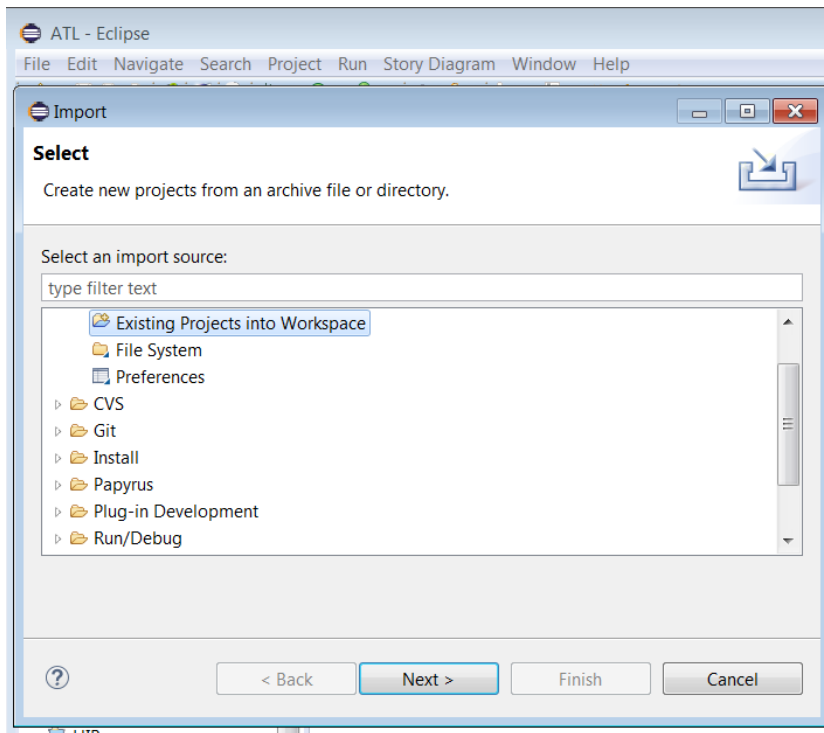
Now push Finish. In the next two wizard pages (called Install and Install Details) just confirm the selection by pushing 'Next >'. Read and accept the terms of the license agreements and push Finish again. Once the installation is completed, restart Eclipse.

Download and Import ATL Projects

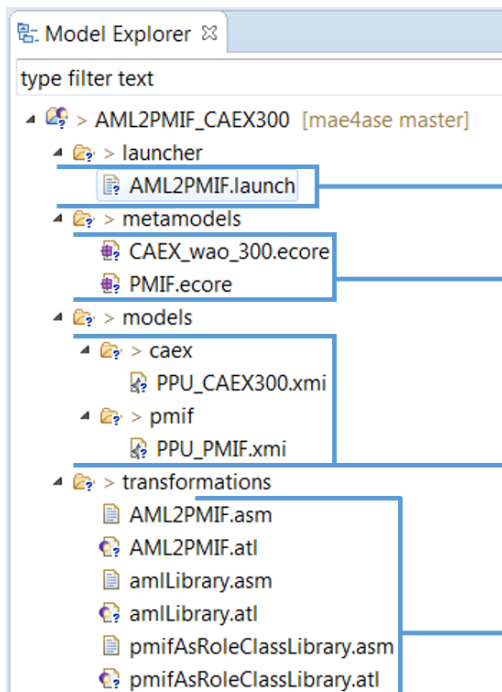
The Eclipse ATL project archive

1. AML2PMIF.zip

has to be imported your Eclipse Workspace (File>Import>Existing Projects into Workspace>)



AML2PMIF Project Content



Launcher

- Right Click on `[launcher name].launch`
- Run As > `[transformation].atl`

Ecore Metamodels

- Right Click on `CAEX_wao_300.ecore`
- Register EPackages **IMPORTANT!**
- Right Click on `PMIF.ecore`
- Register EPackages **IMPORTANT!**

Model

- Input Model: CAEX 3.00 compliant file
- Output Model: PMIF compliant file

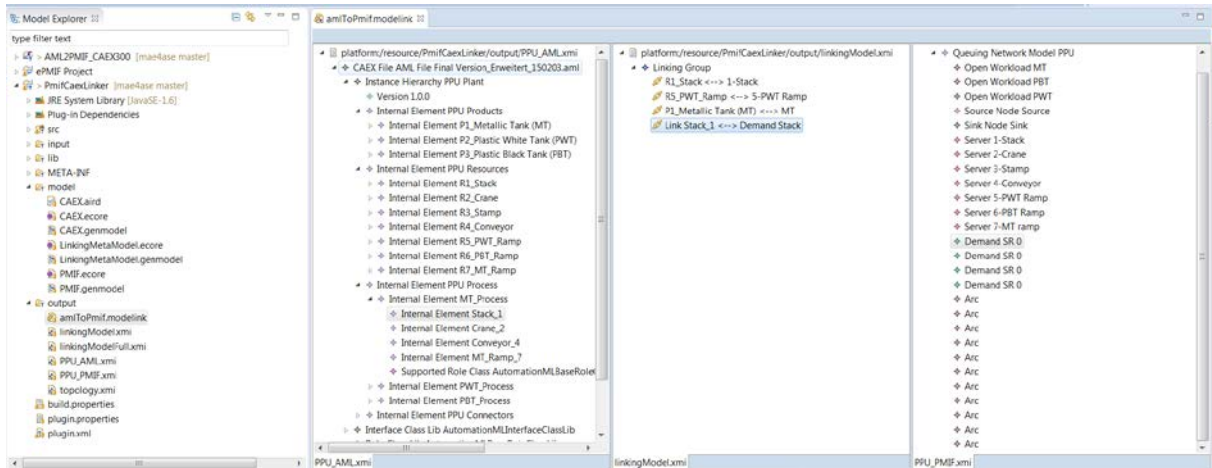
ATL Transformation source folder

Steps:

1. Register EPackages
2. Open .xmi AML Models to check their content

3. Launch Transformation
4. Check the PMIF output models in the /models/pmif folder

PMIFCaex Linker Project Content



1. Register EPackages (.ecore files in /models)
2. Open amiToPmif.modelink
3. Browse the central panel to dynamically scroll the left and right panels to the linked model elements.