

README

This page provides information on how to download, run and setup the Eclipse bundle for executing AML2SysML and SysML2AML ATL model transformations.

Download Eclipse

First you have to download the [Eclipse Modeling Tools \(version: Luna\)](#) for your operating system and architecture. Once the download is finished, unzip the downloaded archive to any location you prefer. Please note, however, that the location should be writable without additional user permissions so that Eclipse may autonomously install updates and additional plug-ins.

Run Eclipse

The prerequisite for running Eclipse is a current version of the [Java Runtime Environment](#). Eclipse itself does not have to be "installed" per se. You may directly start Eclipse by running eclipse (.exe in case you use Windows). Select a workspace location according to your personal preferences.

Install Required Plug-Ins

For elaborating the assignments, you need to install four additional plug-ins:

- ATL
- Papyrus

1. ATL, Xtext, OCL Tools

For installing ATL you have to select Help -> Install Modeling Components and check the components:

- Model To Model – ATL
- Modeler – Papyrus (it includes the SysML profile for UML Models)

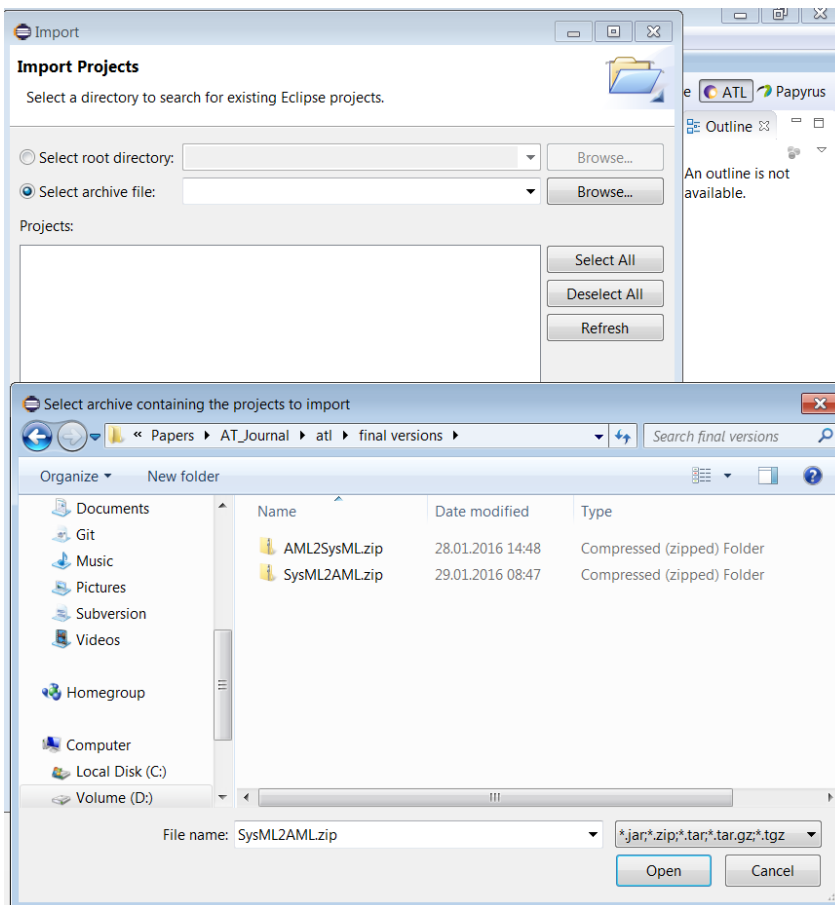
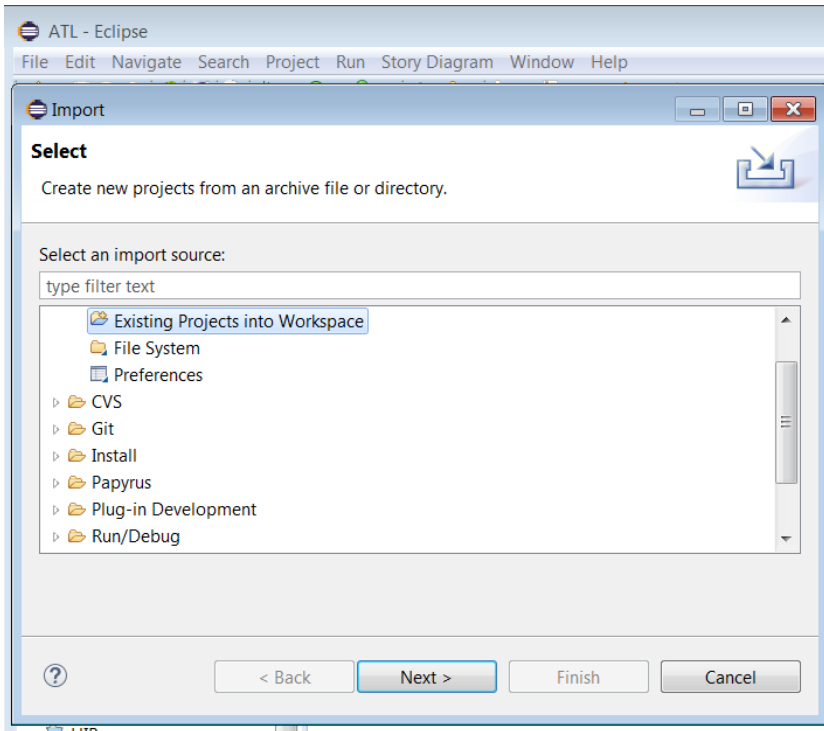
Now push Finish. In the next two wizard pages (called Install and Install Details) just confirm the selection by pushing 'Next >'. Read and accept the terms of the license agreements and push Finish again. Once the installation is completed, restart Eclipse.

Download and Import ATL Projects

The Eclipse ATL project archives

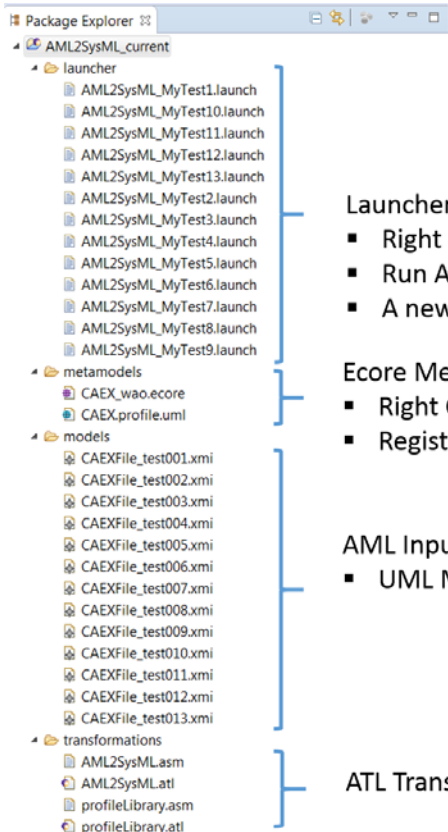
1. AML2SysML.zip
2. SysML2AML.zip

have to be imported your Eclipse Workspace (File>Import>Existing Projects into Workspace>)



AML2SysML Project Content

(The content of the SysML2AML Project is similar)



Launchers

- Right Click on *[launcher name].lunch*
- Run As > *[transformation].atl*
- A new UML Model *[test name].uml* from AML Model *[test name].xmi*

Ecore Metamodels and UML Profiles

- Right Click on CAEX_wao.ecore
- Register EPackages **IMPORTANT!**

AML Input models (.xmi) and UML Output models (.uml)

- UML Models are generated as output after launchers executions

ATL Transformation source folder

Steps:

1. Register EPackages
2. Open .xmi AML Models to check their content
3. Launch Transformation
4. Check the .uml output in the /models folder